



LW4134EN



INTERMEDIATE

knitting

Designed by Susan Robicheau.

What you will need:

RED HEART® Detroit: 1 (2, 2, 3) balls 05668 Middle Grey

OR

RED HEART® Lisa: 2 (4, 4, 6) balls 05668 Middle Grey

Knitting Needles: 4.5mm [US 7]

4 (4, 4, 5) 13mm [1/2"] buttons, stitch markers, stitch holders, yarn needle

TENSION/GAUGE: 18 sts = 10 cm [4"]; 24 rows = 10 cm [4"] in Garter Row Pattern. CHECK YOUR TENSION/GAUGE. Use any size needle to obtain the tension/gauge.



Red Heart® Detroit, Art. 9809651 available in 100 g (3.5 oz), 266 m (291 yd) balls OR



Red Heart® Lisa, Art. 9809619 available in 50 g (1.76 oz), 133 m (145 yd) balls



Sweet and Cuddly Baby Cardigan

Knit this darling cardigan for your sweet baby. The easy-care yarn comes in almost every colour you can think of, so it's easy to personalize.

Directions are for size 6 months; changes for sizes 12, 18 and 24 months are in parentheses.

FINISHED MEASUREMENTS

Finished Chest: 51 (53, 55.5, 59) cm [20 (21, 21¼, 23)"]

Finished length: 26.5 (28, 28, 32) cm [10½ (11, 11, 12¾)"]

Pattern Stitches

Seed Stitch (multiple of 2 sts + 1)

All rows: *K1, p1; repeat from * to last st, k1.

Eyelet Pattern (multiple of 6 sts + 7)

Row 1 (Wrong Side): K3, *p1, k1; repeat from * to last 2 sts, k2.

Row 2 (Right Side): K5 *sl3 wyib, k3; repeat from * to last 2 sts, k2.

Row 3: K2, *p3, sl3 wyif, repeat from * to last 5 sts, p3, k2.

Row 4: K2, *k1, yo, k2tog, k1, sl1 wyib, k1, repeat from * to last 5 sts, k1, yo, k2tog, k2.

Row 5: K2, *p1, k1, repeat from * to last stitch, k1.

Row 6: K2, *sl3 wyib, k3, repeat from * to last 5 stitches, sl3 wyib, k2.

Row 7: K2, *sl3 wyif, p3, repeat from * to last 5 stitches, sl3 wyif, k2.

Row 8: K2, *k1, sl1 wyib, k2, yo, k2tog, repeat from * to last 5 stitches, k1, sl1 wyib, k3.

Garter Row Pattern (any number of sts)

Row 1 (Right Side): Knit.

Row 2: K1, purl to last st, k1.

Rows 3, 4: Knit.

BACK

Cast on 49 (49, 49, 61) sts. Work 2 rows Seed Stitch.

Work Eyelet Pattern until piece measures 7.5 (7.5, 7.5, 10) cm [3 (3, 3, 4)"], end on a right side row.

Decrease row (Wrong Side): Knit, decreasing 4 (2, 0, 9) sts evenly spaced across row – 45 (47, 49, 52) sts.

Work Garter Row Pattern 11 (12, 12, 13) times. Place sts on holder.

RIGHT FRONT

Cast on 25 (25, 25, 31) sts. Work 2 rows Seed Stitch.

Work Eyelet Pattern until piece measures 7.5 (7.5, 7.5, 10) cm [3 (3, 3, 4)"], end on a right side row.

Decrease row (Wrong Side): Knit, decreasing 4 (1, 0, 5) sts evenly spaced across row – 21 (24, 25, 26) sts.

Work Garter Row Pattern 10 (11, 11, 12) times.

Shape neck

Next row (Right Side): K8 (10, 10, 10), place sts on holder; knit to end – 13 (14, 15, 16) sts. Work rows 2-4 of Garter Row Pattern once.

Piece should measure same as Back; place sts on holder.

LEFT FRONT

Cast on 25 (25, 25, 31) sts. Work 2 rows Seed Stitch.

Work Eyelet Pattern until piece measures 7.5 (7.5, 7.5, 10) cm [3 (3, 3, 4)"], end on a right side row.

Decrease row (Wrong Side): Knit, decreasing 4 (1, 0, 5) sts evenly spaced across row – 21 (24, 25, 26) sts.

Work Garter Row Pattern 10 (11, 11, 12) times.

Shape neck

Next row (Right Side): K13 (14, 15, 16); place remaining sts on holder.

Work rows 2-4 of Garter Row Pattern once. Piece should measure same as Back; place sts on holder.

Continued...



Please Note: Print this pattern using Landscape Orientation.

Find more ideas & inspiration: www.redheart.co.uk

©2014 Coats & Clark

RedHeart.co.uk

Page 1 of 2

SLEEVE (Make 2)

Cast on 23 (23, 25, 27) sts. Work 2 rows Seed Stitch.

Knit 1 row. Work Garter Row Pattern, increasing 1 st each end every 6 rows 6 (7, 8, 8) times – 35 (37, 41, 43) sts. Work even until sleeve measures 16.5 (19, 21.5, 21.5) cm [6½ (7½, 8½, 8½)"]. Cast off.

FINISHING

With right sides facing, graft shoulders with Kitchener Stitch. Sew sleeves to armhole; sew side and sleeve seams.

Band

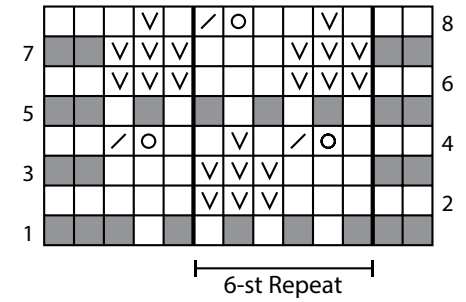
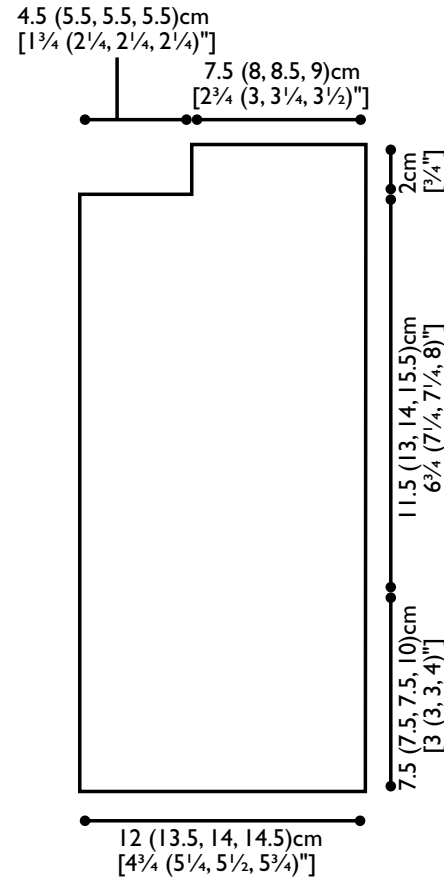
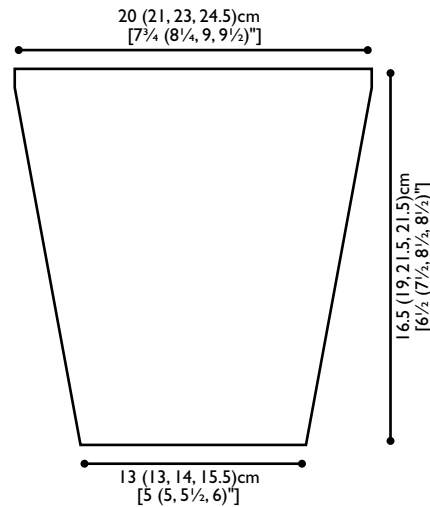
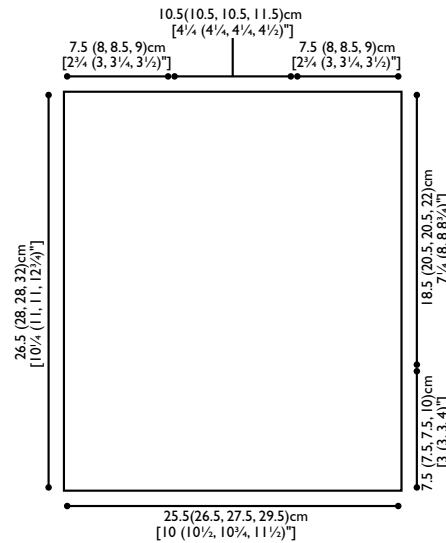
Beginning at Right Front with right side facing, pick up 44 (46, 46, 56) sts on front; k8 (10, 10, 10) right front sts; pick up 3 sts on right neck edge; k19 (19, 19, 20) back neck sts; pick up 3 sts on left neck edge; k8 (10, 10, 10) left front sts; pick up 44 (46, 46, 56) sts on Left Front – 129 (137, 137, 157) sts. Work Seed Stitch for 2 rows.

Buttonhole row (Wrong Side): K1, p1, *yo, k2tog, work 12 (13, 13, 12) sts in pattern; repeat from * 2 (2, 2, 3) more times, yo, k2tog, work to end. Work 1 row in Seed Stitch; bind off in pattern.

Sew buttons opposite buttonholes. Weave in ends.

ABBREVIATIONS

k = knit; **p** = purl; **st(s)** = stitch(es); **St st** = Stockinette stitch; **k2tog** = knit next 2 stitches together; **inc** = increase 1 stitch; **yo** = yarn over; **sl** = slip stitch(es); **wyib** = with yarn in back; **wyif** = with yarn in front; **[]** = work directions in brackets the number of times specified; * = repeat whatever follows the * as indicated.



Stitch Key

- = K on right side, p on wrong side
- = P on right side, k on wrong side
- = Sl wyib on right side, sl wyif on wrong side
- = Yo
- = K2tog



Please Note: Print this pattern using Landscape Orientation.

Find more ideas & inspiration: www.redheart.co.uk

©2014 Coats & Clark

RedHeart.co.uk